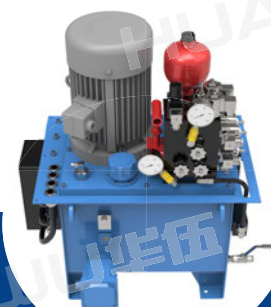




SBH, YLH, YZBA, YZBS SERIES HYDRAULIC POWER UNIT

SBH、YLH、YZBA、YZBS系列液压站

致力传动安全 Committed to transmission security



SBH、YLH、YZBA、YZBS系列液压站

SBH.YLH.YZBA.YZBS SERIES HYDRAULIC POWER UNIT

应用：

- SBH系列液压站主要用于SB、SBD系列安全制动器的配套驱动，也可作为其它单作用油缸的配套驱动。液压站型号加后缀/1时用于单机构安全制动器配套，控制制动器同时打开和同时关闭；液压站型号加后缀/2时用于双机构安全制动器配套，输出有2条独立的油路，每条油路的制动器既可以同时打开和关闭，也可以分开动作。如用于其它多机构分开动作时，订货时需特别说明。
- YLH系列液压站主要用于YLZ系列轮边制动器的配套驱动，也可作为其它单作用油缸的配套驱动。
- YZBA系列液压站主要用于YJA、YJD、YJE、YJJ系列夹轨器和YGZ系列顶轨器的配套驱动，也可作为其它单作用油缸的配套驱动。
- YZBS系列液压站主要用于SBD系列安全制动器的配套驱动，也可作为其它单作用油缸的配套驱动。

Application:

- *SBH series hydraulic power units are mainly applied to the matched drives of SB/SBD series safety brakes and other single-acting cylinders. Such hydraulic power units that add a suffix/1 behind the type of hydraulic power units shall be applied for single-mechanism safety brakes, which can be used to control the releasing and closing of brake at the same time; such hydraulic power units that add a suffix/2 behind the type of hydraulic power units shall be applied for double-mechanism safety brakes, this series hydraulic power units have two independent oil circuits for outputting, which can be applied to control the releasing and closing of brake on each circuit at the same time, and also can apply releasing and closing separately. If applied for other multiple mechanisms to apply releasing and closing separately, special instructions shall be made when ordered.*
- *YLH series hydraulic power units are mainly applied to the matched drives of YLZ series wheel brakes and other single-acting cylinders.*
- *YZBA series hydraulic power units are mainly applied to the matched drive of YJA, YJD, YJE, YJJ series rail clamps and YGZ series rail brakes as well as the matched drive of other single-acting cylinders.*
- *YZBS series hydraulic power units are mainly applied to the matched drive of SBD series safety brakes as well as the matched drive of other single-acting cylinders.*



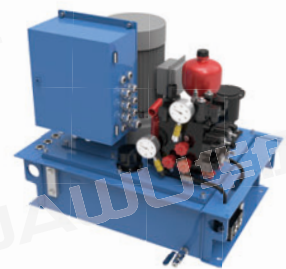
YZA系列 Series



YLH系列 Series



YZBA系列 Series



YZBS系列 Series

主要特点 Main feature:

1

- + 主要液压元器件采用国内外知名品牌，性能稳定、可靠。也可根据客户要求，选择Rexroth、Parker、Vickers等品牌液压元器件。

Main hydraulic components adopt domestic and foreign famous brand with stable and reliable performance. Hydraulic components like Rexroth, Parker, Vickers and so on also can be selected according to customers' requirements.

2

- + 主要阀件均为锥阀，配有蓄能器、压力继电器，系统具备一定的压力补偿功能。

Main valves are cone valves, which are equipped with accumulator and pressure relay, system is provided with certain pressure compensating function.

3

- + 配有手动泵，可在断电、检修时作应急动力源。

Be equipped with hand pump, which can be used as the emergency power supply when powered off and maintained.

订货标记 Order Mark

SBH 14-16/□-□-□-□-□

其它特殊要求(如油箱、护罩采用不锈钢材质、配集油盘、电控箱等)，可用文字说明。

备注：YZBA/YZBS标配电控箱，SBH/YLH标配为接线端子箱。

Special requirements(e.g. oil tank and protective cover use stainless steel material, be equipped with oil-collecting tray and electric control box, etc.), details can be described in words.

Remark: YZBA/YZBS is normally with electric control box, SBH/YLH is normally with terminal box.

控制电压和频率(AC220V/50Hz可不标)

Voltage and frequency of Control power (AC220V/50Hz omitted)

电机电压和频率(AC380V/50Hz可不标)

Voltage and frequency of motor power (AC380V/50Hz omitted)

附加装置 Additional devices

HS/TS:配液位液温开关 With level/temperature switch

W:配加热器(加热器自带温控,默认电压等级AC220V,其它电压等级需在订货中说明)
With heater (heater self-equipped with temperature control, voltage is AC220V, other voltage shall be described in order)

可单独控制的油路数量(可单独控制的油路数量(单油路是为1,双油路时为2))

Number of oil circuits that can be controlled separately (single oil circuit is 1, double oil circuits are 2)

额定流量(L/min) Rated circuit flow(L/min)

额定工作压力(MPa) Rated pressure(Mpa)

产品型号 Type

—SBH系列 SBHA Series

—YLH系列 YZB Series

—YZBA系列 YZBA Series

—YZBS系列 YZBS Series

订货示例 Order Example

SBH14-09/2.HS.TS.W 表示双油路液压站，额定工作压力14Mpa，额定流量9L/min，机电电压为AC380V/50Hz，控制电压为AC220V，加热器电压为AC220V。

SBH14-09/2.HS.TS.W means double-circuit hydraulic power unit, rated working voltage is 14Mpa, rated flow is 9L/min, motor voltage is AC380V/50Hz, control voltage is AC220V, voltage of heater is AC220V.

注：当环境温度低于-20℃时，液压站应配置加热器W，通过加热器自带的温控，自动控制油温低于设定值时加热。高于设定值时停止加热。

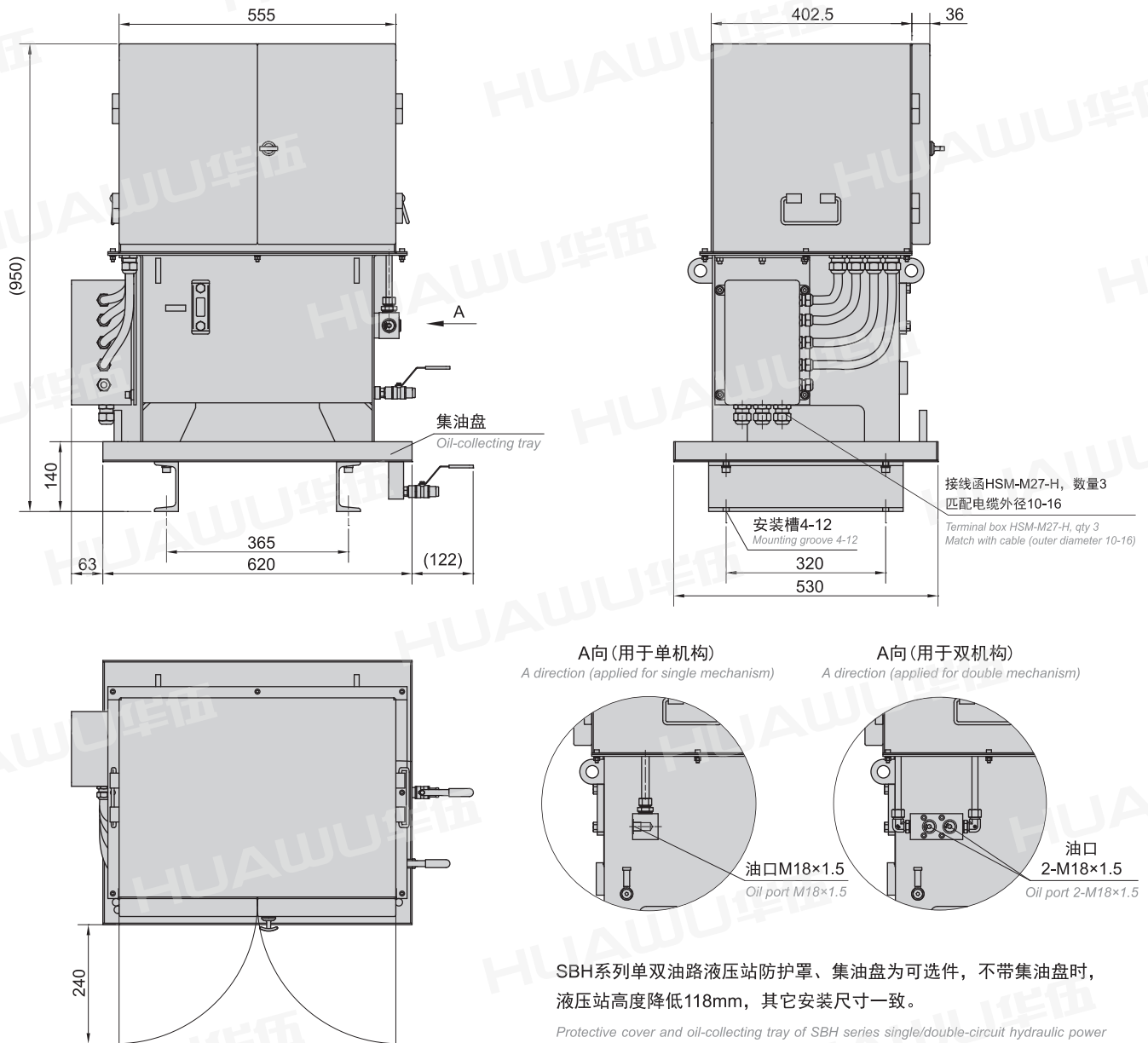
Note: When ambient temperature is lower than -20℃, hydraulic power unit shall be equipped with heater W, this heater is equipped with a temperature controller, and this heater will heat up when the oil temperature is automatically controlled to be lower than the set value, and stop heating up when oil temperature is higher than the set value.

外形及安装尺寸

Outline and installation dimensions

SBH系列单/双油路液压站外形图

Outline drawing for SBH series single/double-circuit hydraulic power unit





YLH系列 Series
液压站
Hydraulic Power Unit

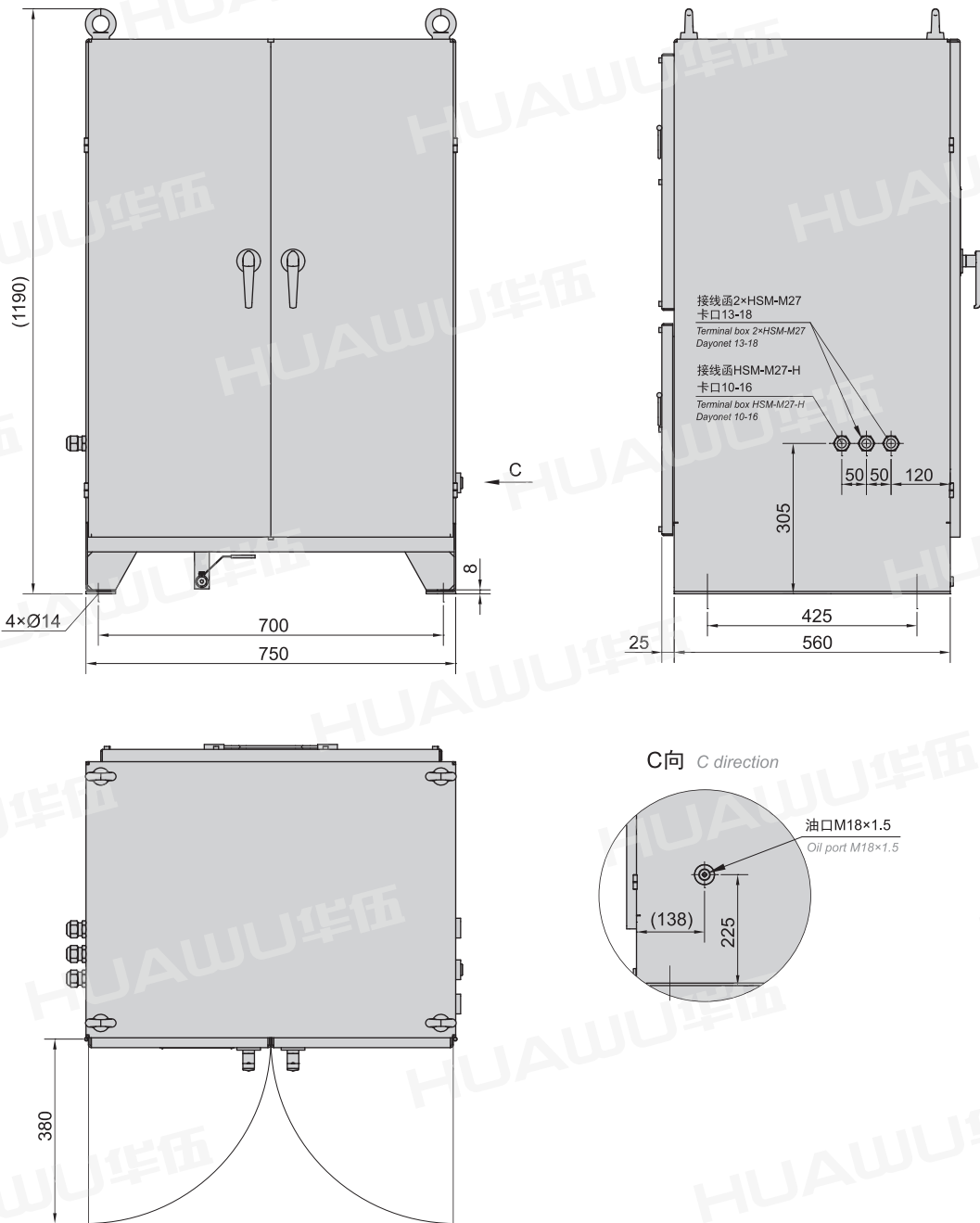
V1.2

外形及安装尺寸

Outline and installation dimensions

YLH系列液压站外形图

Outline drawing of YLH series hydraulic power unit





YZBA系列 Series
液压站
 Hydraulic Power Unit

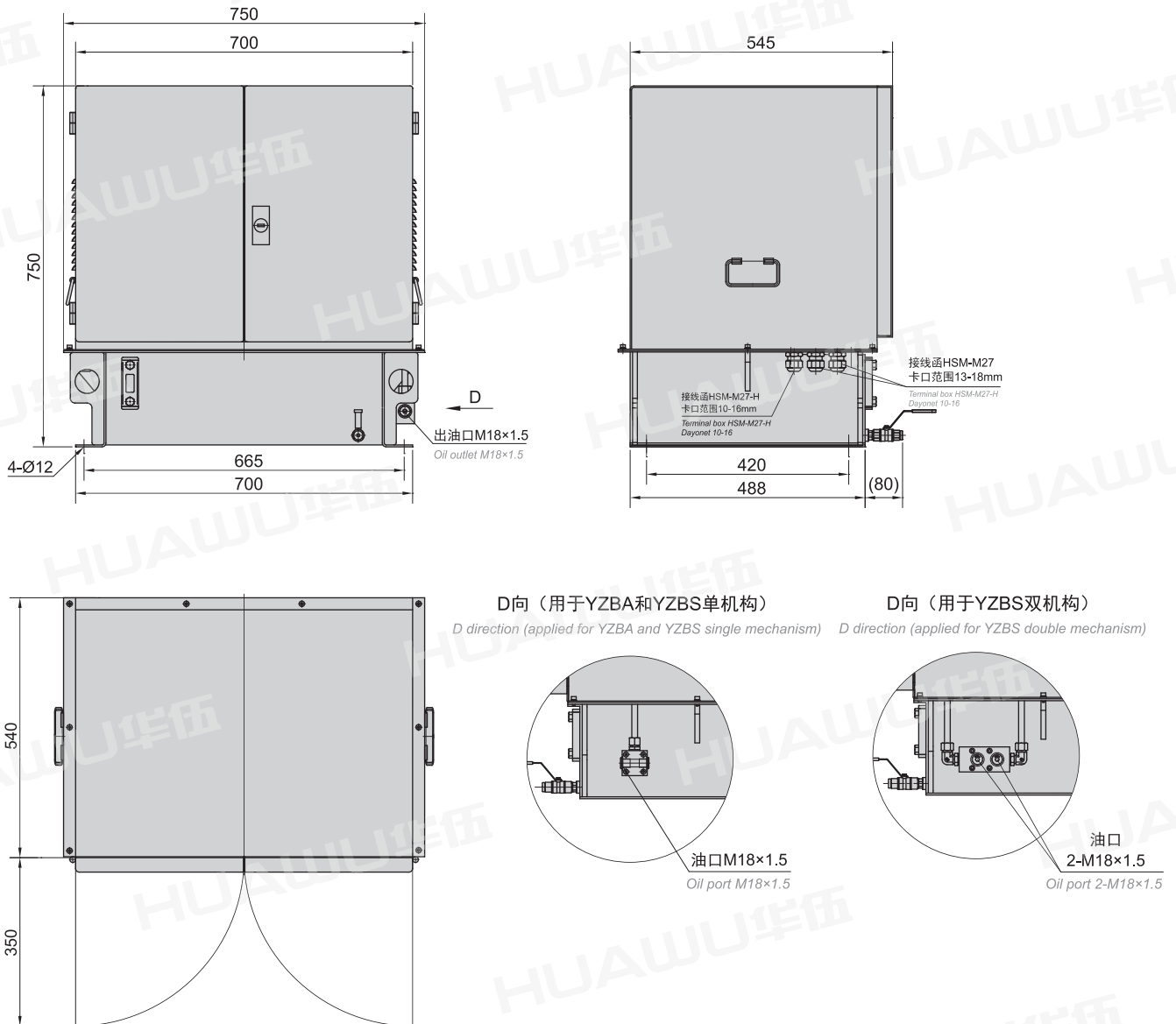
V1.2

外形及安装尺寸

Outline and installation dimensions

YZBA、YZBS系列液压站外形图

Outline drawing of YZBA and YZBS series hydraulic power unit





SBH.YLH.YZBA.YZBS系列 Series
液压站
 Hydraulic Power Unit

V1.2

技术参数及选型对照表 Table for technical data and type selection

| 液压站型号 Hydraulic power unit type | 额定工作压力 Rated pressure (MPa) | 额定流量 Displacement (L/min) | 电机额定功率 Power of motor KW | 电机电源 Power supply of motor | 控制电源 Power of control | 适用产品 Application | 重量 (不包含液压油) Weight(Exclude hydraulic oil) | 备注 Note |
|------------------------------------|--------------------------------|------------------------------|-----------------------------|-------------------------------|--------------------------|---|---|---|
| SBH10-12/1 | 10 | 11.5 | 2.2 | AC380V/50Hz | AC220V/50Hz | SBD250-C、SBD365-C | 185 | 适用于单机构 单台液压站配套 1-2套安全制动器 Applied for single-mechanism hydraulic power unit equipped with 1-2 sets of safety brakes |
| SBH10-20/1 | | 20 | 4 | | | SBD425-C | 195 | |
| SBH14-09/1 | 14 | 8.6 | 2.2 | | | SB50、SB100、SB160、SB250 | 185 | |
| SBH14-16/1 | | 15.8 | 4 | | | SB315、SB400、SB500 | 195 | |
| SBH10-12/2 | 10 | 11.5 | 2.2 | | | SBD250-C、SBD365-C | 205 | 适用于双机构 单台油路配套 1-2套安全制动器 Applied for double-mechanism hydraulic power unit equipped with 1-2 sets of safety brakes |
| SBH10-20/2 | | 20 | 4 | | | SBD425-C | 215 | |
| SBH14-09/2 | 14 | 8.6 | 2.2 | | | SB50、SB100、SB160、SB250 | 205 | |
| SBH14-16/2 | | 15.8 | 4 | | | SB315、SB400、SB500 | 215 | |
| YLH08-20/1 | 8 | 20 | 4 | AC380V/50Hz | AC220V/50Hz | 8台及以内YLZ25、YLZ40夹轨器 | 280 | 适用于 轮边制动器 Applied for wheel brakes |
| YLH08-32/1 | | 32 | 5.5 | | | 12台及以内YLZ25、YLZ40夹轨器 | 300 | |
| YLH12-16/1 | 12 | 15.8 | 4 | | | 8台及以内YLZ63、YLZ100夹轨器 | 280 | |
| YLH12-32/1 | | 32 | 7.5 | | | 12台及以内YLZ63、YLZ100夹轨器 | 305 | |
| YZBS10-12/1 | 10 | 11.5 | 2.2 | AC380V/50Hz | AC220V/50Hz | SBD(80、160)-B | 205 | 适用于单机构 单台液压站配套 1-2套安全制动器 Applied for single-mechanism hydraulic power unit equipped with 1-2 sets of safety brakes |
| YZBS10-20/1 | | 20 | 4 | | | SBD(100、125)-A | 215 | |
| YZBS14-09/1 | 14 | 8.6 | 2.2 | | | SBD(80、120)-D | 205 | |
| YZBS14-16/1 | | 15.8 | 4 | | | SBD(160、200、250、315)-A | 215 | |
| YZBS10-12/2 | 10 | 11.5 | 2.2 | | | SBD(80、160)-B | 205 | 适用于双机构 单台油路配套 1-2套安全制动器 It is applied for double mechanism with 1-2 sets of single-circuit safety brakes |
| YZBS10-20/2 | | 20 | 4 | | | SBD(100、125)-A | 215 | |
| YZBS14-09/2 | 14 | 8.6 | 2.2 | | | SBD(80、120)-D | 205 | |
| YZBS14-16/2 | | 15.8 | 4 | | | SBD(160、200、250、315)-A | 215 | |
| YZBA10-12/1 | 10 | 12 | 2.2 | AC380V/50Hz | AC220V/50Hz | 1台YJA160或YJD160夹轨器 | 205 | 适用于 夹轨器、顶轨器 It is applied for rail clamp and rail brake |
| YZBA10-20/1 | | 20 | 4 | | | 1台YJJ400夹轨器 | 215 | |
| YZBA12-16/1 | 12 | 4 | 1台YJA400或YJD400夹轨器 | | | 215 | | |
| YZBA14-09/1 | 14 | 9 | 2.2 | | | 1台YJA(200、250、315)或 YJD(200、250、315)夹轨器 | 205 | |
| YZBA14-20/1 | | 20 | 5.5 | | | 1台YJJ500或YJA600夹轨器 | 230 | |
| YZBA14-27/1 | 16 | 27 | 7.5 | | | 1台YJJ(800、1200)或YJA(1000、 1200)夹轨器、1台YGZC70顶轨器 | 235 | |
| YZBA16-12/1 | | 11.5 | 4 | | | 1台YJA560或YJD560夹轨器 | 215 | |
| YZBA16-16/1 | | 15.8 | 5.5 | | | 1台YJA800夹轨器 | 230 | |
| YZBA16-23/1 | 23 | 7.5 | 1台YGZC40或YGZB40顶轨器 | 235 | | | | |

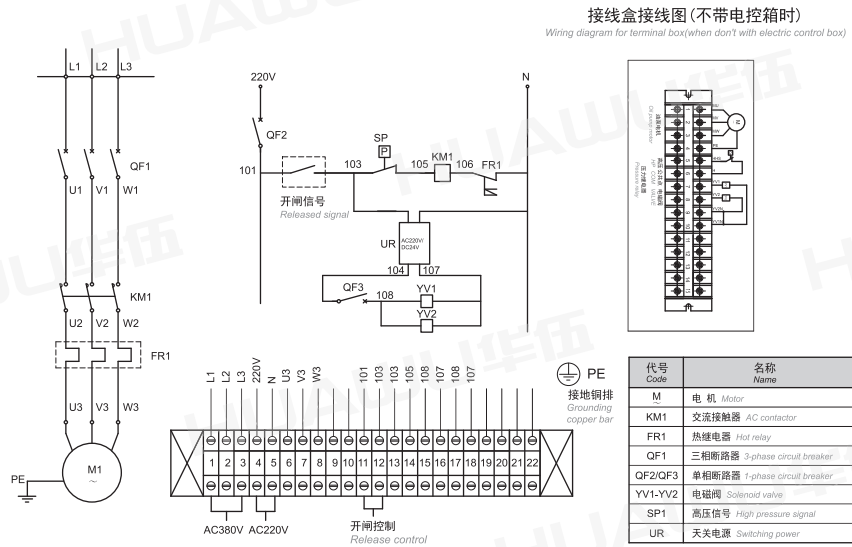
注：(1) YZBS、YZBA系列液压站标配防护罩及电控箱，YLH系列液压站标配带防护罩，YLH系列及其余规格的液压站均不配电控箱只配接线端子箱，若需配电控需在订货时注明，SBH系列液压站防护罩为可选件，用于室外的液压站必须配防护罩。(2) 对于不配电控箱液压站，用户可参照下面的原理自行设计电控，电磁阀电压推荐采用DC24V。(3) 表中对单台液压站配套相应产品(同时动作的)的数量有规定，若超过此限的可联系本公司技术部门。(4) 因产品改进，样本中尺寸可能会改变，恕不一一通知，必要时请联系我们。

Note: (1)YZBS and YZBA series hydraulic power units are normally equipped with protective cover and electric box, YLH series hydraulic power units are normally equipped with protective cover, YLH series and other series of hydraulic power units are not equipped with electric control box but only equipped with terminal box, if need to equip electric control box, please note when ordered, protective cover of SBH series hydraulic power units are optional, the hydraulic power units used outdoor must be equipped with protective cover. (2) For such hydraulic power units without electric control box, customers can design the electric control box by themselves according to following principle, voltage of solenoid valve is recommended to adopt DC24V. (3)The quantity of corresponding products equipped on single set of hydraulic power unit (act at the same time) have been specified in this table, if exceeded the specified quantity, please contact our technical department. (4)Due to the improvement of products, dimensions in this sample book may be changed, so please contact us without any hesitation if necessary.

电控原理图

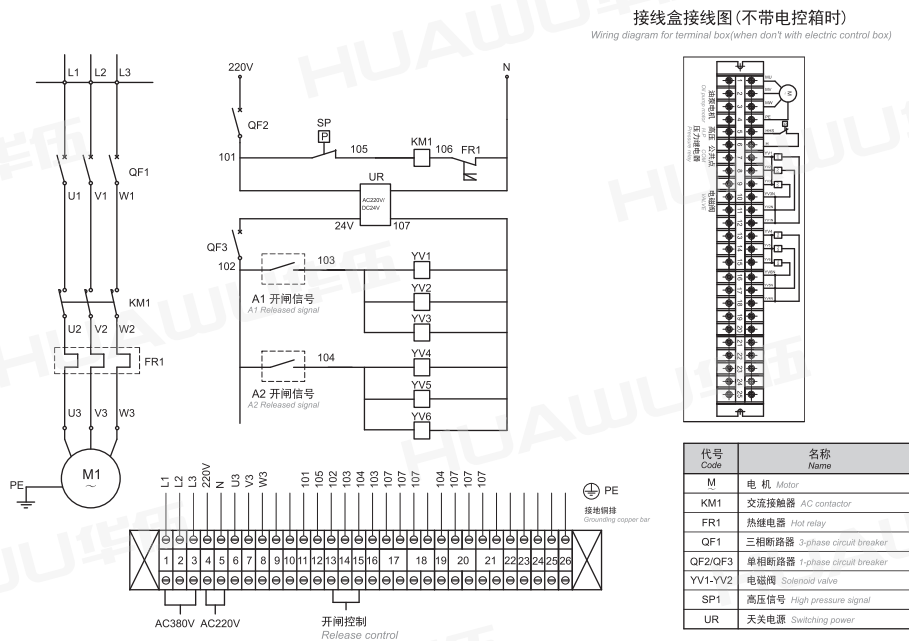
Electric control schematic diagram

SBH、YZBS系列单油路液压站电控原理和接线图



遥控输入端, 其余元件液压站内部已经接好。
Remotely control input end, the other components that inside the hydraulic power unit have been well-connected.

SBH、YZBS系列双油路液压站电控原理和接线图



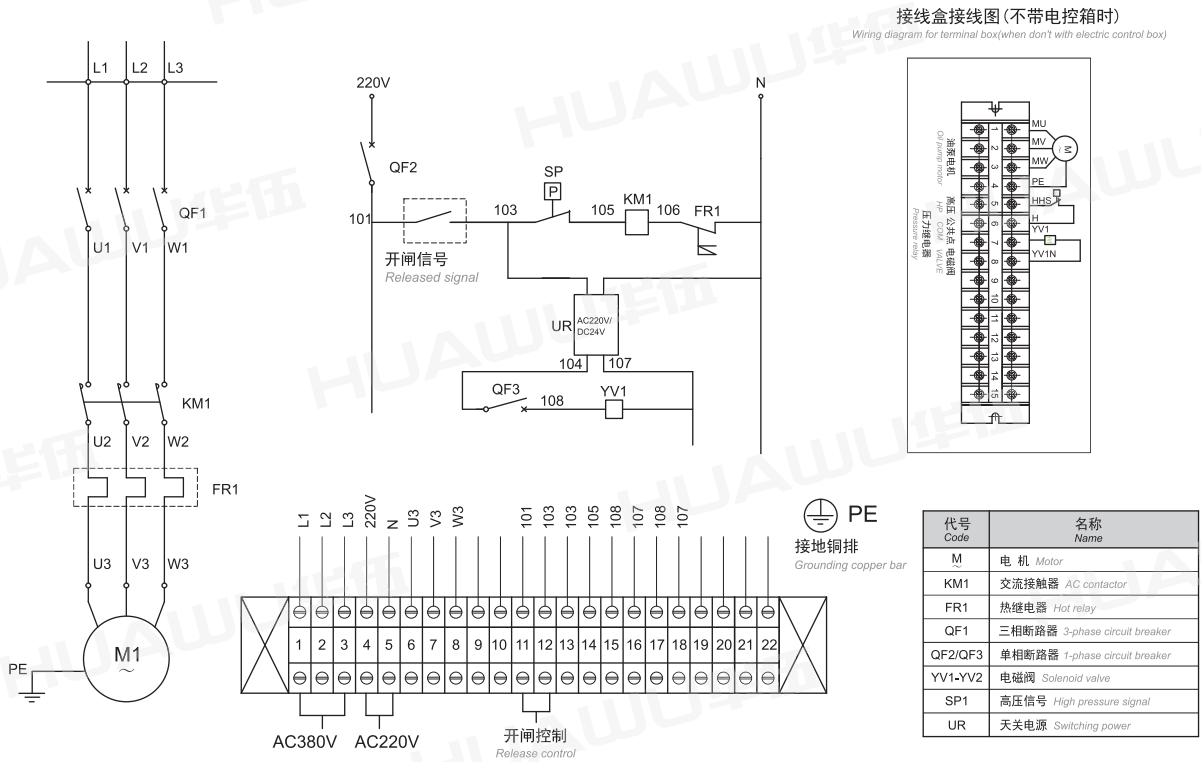
遥控输入端, 其余元件液压站内部已经接好。
Remotely control input end, the other components that inside the hydraulic power unit have been well-connected.

电控原理图

Electric control schematic diagram

YLH、YZBA系列液压站电控原理和接线图

Electric control schematic diagram and wiring diagram for YLH and YZBA series hydraulic power unit



远控输入端，其余元件液压站内部已经接好。

Remotely control input end, the other components that inside the hydraulic power unit have been well-connected.