

股票代码 603915

Company Profile of Guomao Reducer

GUOMAO
国茂股份



目 录

CONTENTS

- About us
- Company development
- Product series
- Our honor
- Industrial applications
- Quality Management
- Technological equipment
- Sales & service
- Interchange and cooperation
- Our vision

About us



Site area

530,000 m²



2021 reducer production

700,000+ 台



Number of employees

2400+



2021, total operating revenue
increased year-on-year

34.81%

- Company development

1993年

Establishment of the Guotai Reducer plant in Changzhou



1996年

Register "guomao" trademark



2006年

Guomao Reducer Group Co., Ltd.



2012年

Establish the industry's first GPS productionLean assembly line



2016年

Overall change to "Jiangsu Guomao Reducer Co., Ltd."



2017年

G series gear motor
Successful delivery of our 1,000,000th reducer



2019年

Successful listing of Guomao shares
Stock ticker code: 603915



2020年

Annual output of 350,000 units of reducer project
Main body construction completed



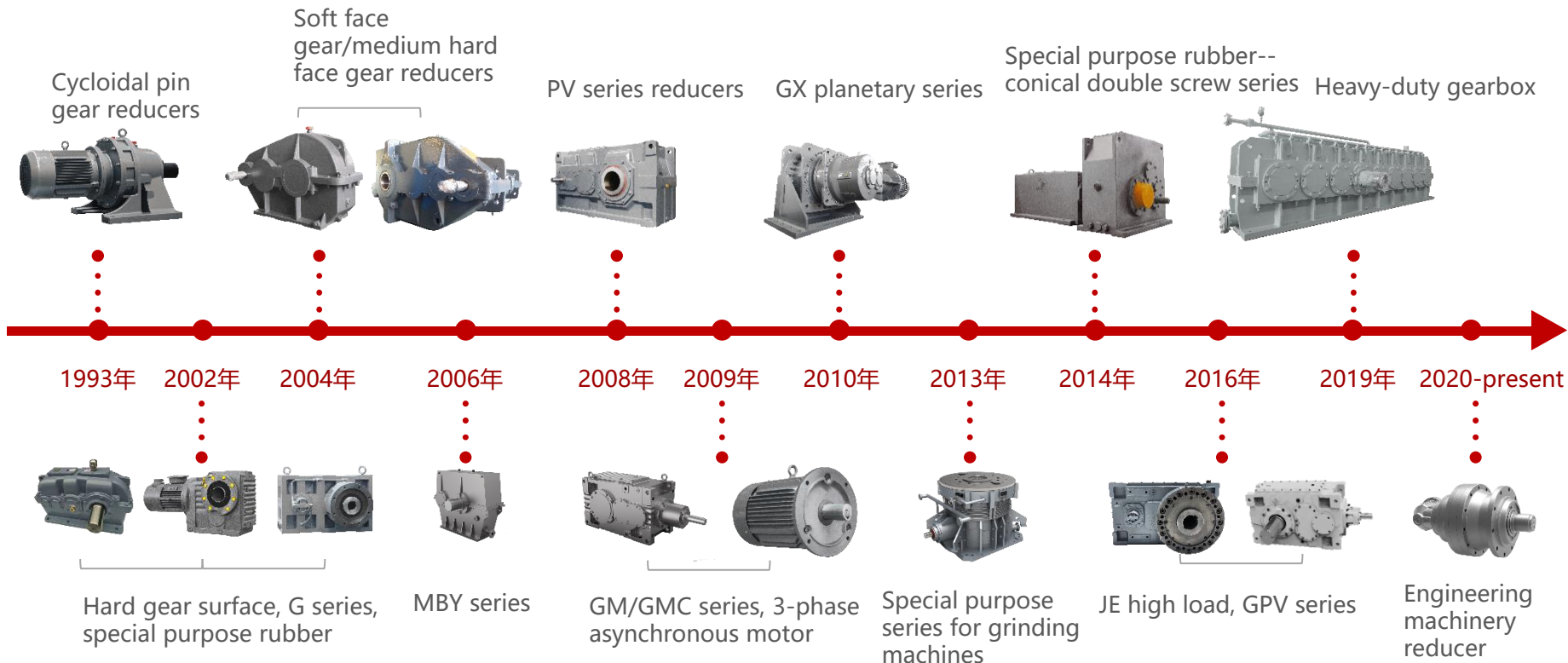
SINCE

• Product history

- Putting customers first
- Geared toward the market

Around 8 million "Guomao" brand reducers are in use worldwide

Around 8 million "Guomao" brand reducers are in use



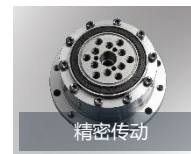
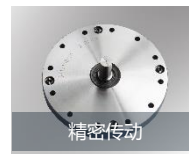
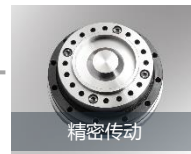
通用系列



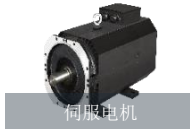
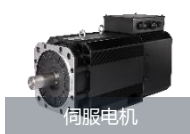
重载



精密

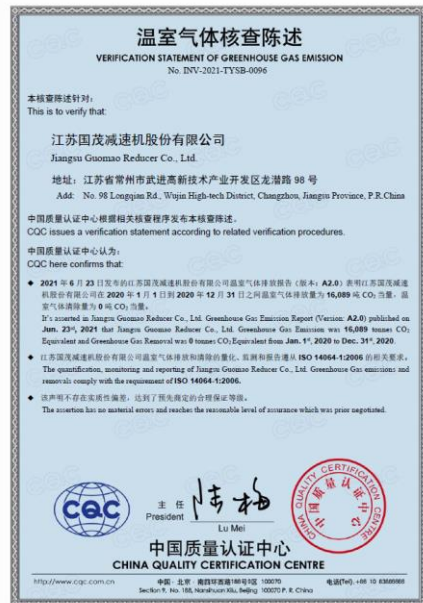


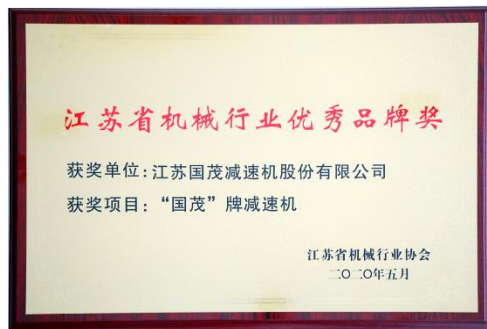
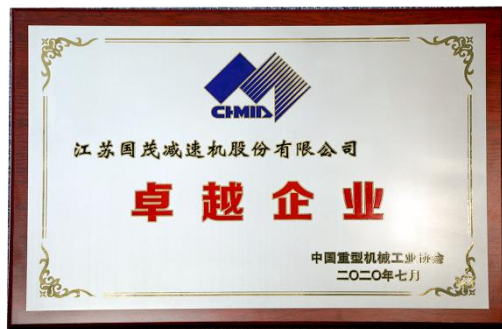
机电一体化

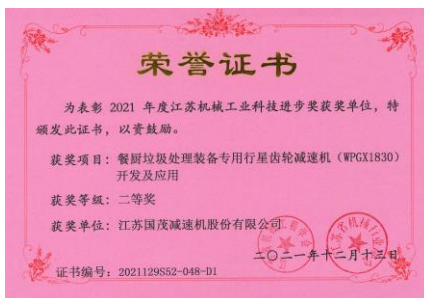


工程机械









- Industrial applications

Construction material machinery



Crushing machine
Roller pressing machine
Rotary kilns
Ball mills

Port equipment



Grab ship unloader
Ship loader
Belt machine
Bucket wheel machine

Coal mining equipment



Bucket wheel stacker reclaimer
Belt machine
Cast stone scraper plate machine
Crushing machine
Mine hoist
Scraper plate conveyor

Project equipment



Cranes
Pile drivers
Concrete machinery
Road roller
Loading machine

Lifting and transport machinery



Bridge crane
Gantry crane
Loading bridge

Steel & metallurgy



Cart lift
 Transport
 Furnace door lift
 Cold bed rollers
 Cantilever rollers
 Tension roller
 Heating furnace
 transmission

Rubber & plastics



Sealed mixing
 mill
 Open mixing mill
 Extruder

Petrochemicals



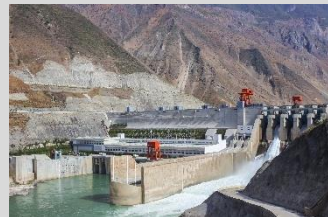
Oil pumping machine
 Well drilling winch
 Rotary disk drive
 Expansion machine
 Compressor

Environmental protection



Dust removal
 Desulfurization &
 denitrification machinery
 Solid waste disposal
 Filter press
 Screw sludge dewatering
 machine
 Worm conveyor

Power equipment



Ship lift machine
 Gate lifting machine
 Desulfurizing wet
 grinding machine
 Desulfurizing
 pump/slag-slurry
 pump
 Air cooling island

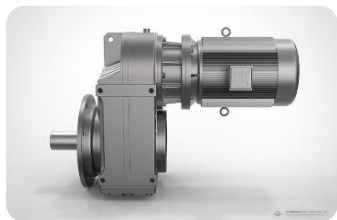
- Distribution of sales network locations

Overseas subsidiaries
1

Overseas service centers
3

Domestic class A distributors
78





GF series



GK series



GR series



GS series

G series gear motors

- Neat and attractive to meet the public's aesthetic preferences. Installation dimensions can completely satisfy the requirements of users in all industries.
- We offer a full range of products in this series and produce many types featuring a highly modular design. Products contain the minimum number of parts, and different types can be paired with each other
- Gear motors can employ inputs from various types of electrical machinery, and can also use other power inputs in accordance with user needs
- A large transmission ratio range that allows fine subdivisions; composite types can have large transmission ratios (ultra-low output rotational speed)
- Non-restrictive installation formats, including: M1, M2, M3, M4, M5, and M6



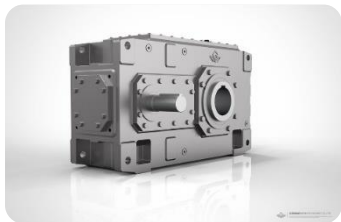
BWD series



BLD series

Cycloidal pin gear reducers

- Our cycloidal pin gear reducers employ the principle of small tooth differential planetary transmission and a novel cycloidal pin gear engagement transmission mechanism
- Guomao brand cycloidal pin gear reducers employ the principle of planetary transmission, and offer structural sturdiness, a compact size, and a high transmission gear ratio and transmission performance
- Cycloidal pin gear reducers have a rational structural design. Chief engaging components employ steel bearings, with excellent mechanical performance, and strong overload capability. Other advantages include excellent impact resistance, small inertial torque, low noise and vibration, long service life, and convenient maintenance.



P series



V series

PV series gearboxes

- Highly modular, minimal parts, numerous gearbox specifications
- Large transmitted power, highly reliable operation
- Installation formats: P and V series gearboxes offer versatile installation formats and can be positioned horizontally or upright
- Service life: When correctly selected, used normally, and provided with maintenance, the main parts and components in gearboxes (apart from easily damaged parts) generally have a service life of no less than 50,000 hours
- Noise: The chief parts and components in gearboxes have undergone precision processing; the processing of gear teeth employs low-noise trimming technology; gearboxes employ a noise-absorbing case structure and undergo precision installation and testing with good cooling performance.



SZ series



ZLYJ series



JE series

Rubber special purpose reducers

- Rubber special purpose reducers are special gear transmission devices specially designed for use in plastic and rubber single-screw extrusion machines.
- Gear parts are made from high-strength alloy steel, and gears undergo carburizing, quenching, and precision gear grinding processing; gears have a precision grade of 6 (GB10095), and have a surface hardness of HRC58-62. A large thrust bearing is installed at the front end of the hollow output shaft, and absorbs the axial thrust of the screw during operation
- Guomao's rubber special purpose reducers offer the advantages of structural sturdiness, a high load-bearing ability, smooth transmission, low noise, and high performance



ZCY series



ZFY series



QY series



ZDY series



ZSY series



GM series

Hard gear surface gear motors

Special purpose reducers

- MBY and JDX series edge drive grinding machine reducers; ZLYJ special purpose reducers for extrusion machines; QY and QJY series special purpose for cranes; and others.

General purpose reducers

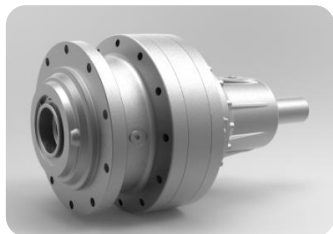
- ZY series; DBY, DCY series; GM, GMC series; PV series.

Standard reducer derivative types

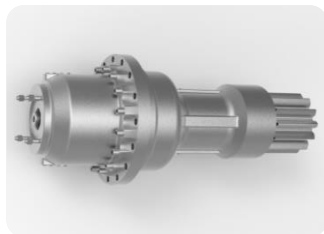
- Including DTZ special purpose responsible for bucket wheel cranes (DCY+GKF); High speed ratio reducers (PV+GKAF); Auxiliary drive reducers (V+GKF).

Custom-made reducers

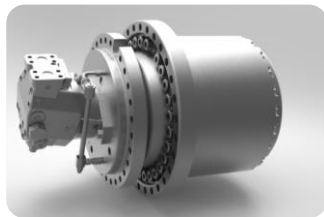
- We can perform design and production in accordance with customer needs.



GLW Rotary Series



GTN General Series



GTR Winch/Walking Series

Engineering Mechanical Planetary Gearbox

GLW: Mainly used for large rotary driving mechanism, with nested structure, small size, light weight, compact structure, large transmission power and high bearing capacity (these characteristics are mainly determined by its internal factors)

GTN: Strong versatility, large transmission ratio, high transmission efficiency; The planetary gear transmission adopts the transmission structure of symmetrical split, so that the forces acting on the center wheel and the rotor bearing balance each other, which is beneficial to improve the transmission efficiency, smooth movement and strong ability to resist impact and vibration.

Planetary gear transmission is stable in motion, strong in shock resistance and vibration resistance, and reliable in operation



GX series



GXZZ series

Planetary gear reducers

- Compact size, light weight, structural sturdiness, high transmitted power, high load-bearing ability (these features are chiefly determined by internal factors)
- Large transmission ratio, excellent transmission performance; Planetary gear transmission employs a symmetrical diversion transmission structure, which helps improve transmission performance by ensuring a balanced force on the central gear and rotary arm bearing. Smooth motion, excellent impact resistance and anti-vibration ability
- Smooth planetary gear transmission motion, excellent impact resistance and anti-vibration ability, reliable operation



GMLX series



MBY series

Special purpose reducers for grinding machines

- Compact size, light weight, structural sturdiness, high transmission power
- The cases of reducers in the GMLX series are welded from high-quality structural steel, and offer excellent strength and toughness
- Convenient installation and maintenance, easy operation
- Offers a compact size, light weight, excellent effectiveness, low vibration, long service life, and smooth motion. Widely used in edge-drive cement and coal grinding machines.



QJ series



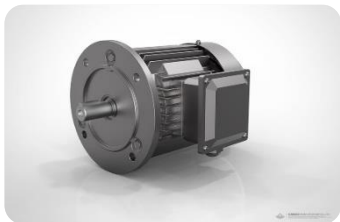
ZQ series

Soft face gear/medium hard face gear reducers

- Soft face gear/medium hard face gear reducers can be used in various crane mechanisms and can also be used in the transmission mechanisms of various types of petroleum, chemical engineering, mining, cement, and construction machinery and equipment
- The axles of our soft face gears are made from No. 45 steel, which is tempered or normalized, and rolled (grade 8 precision); processes are simple and the cost is low. The gear axles in our medium hard face gear reducers are made from medium carbon alloy steel, and undergo hardening and precision rolling, which results in a greater load-bearing ability than soft face gears. Soft face gear and medium hard face gear reducers offer excellent anti-impact ability and can be installed horizontally for splash lubrication; large reducers can be installed vertically with forced lubrication using an oil pump. Easy maintenance and service.



GD-B3 series

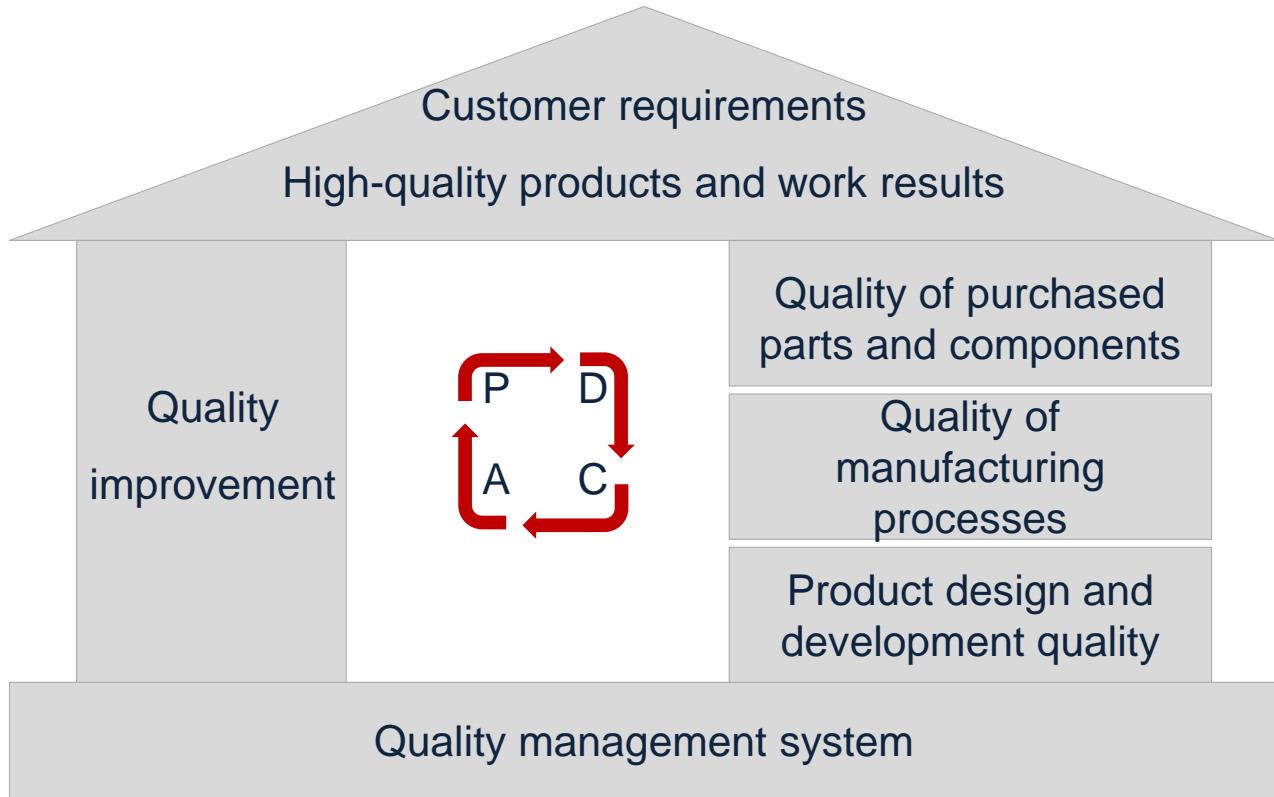


GD-B5 series



3-phase asynchronous motors

- Features include a neat appearance, high performance, energy efficiency, grade F insulation, low vibration, low noise, high protection grade, and excellent safety and reliability;
- IP55 Protection grade, cast-iron case providing dust and splash protection, meets national standards, optimized structure, and guaranteed safe operation;
- Uses name-brand bearings, enameled wire and round copper wire, with guaranteed performance;





CCC 中国强制性产品认证

证书编号: 201530104

委托人名称: 常州市国茂立德传动设备有限公司

生产者(制造商)名称: 常州市国茂立德传动设备有限公司

生产企业名称: 常州市国茂立德传动设备有限公司

产品标准和技术要求: GB14711-2013

发证日期: 2015年11月18日

主任: [Signature]

中国质量认证中心

0 1277120

CELAB®

CERTIFICATE

Certificate Number UCN: 8842359111

Job: 22003

Date of Issue: 2016-11-09

Certificate valid up to: 2020-11-09

Brand Name: /

Type: Motor

Mode N: G03P Type (2kW-315kW), G0 Type (0.12kW-0.375kW), G05E Type (0.12kW-315kW)

Manufacturer: Jiangsu Guomao Electric Motor Co., Ltd. No. 88, Longtan Road, Wujin New and High-tech Industrial District, Jiangsu, CHINA

Standard Used: EN60018-1:2008+A1:2009+A2:2011, EN61000-5-2:2014, EN 12877+A1:2001+A2:2008+AC:1997, EN60351-1:2010+AC:2010

Conclusion: After inspection of the technical documentation issued by the customer, the opinion that the product meets the technical requirement of the following standard is only valid for the direction, the equipment and configuration that are indicated above and still in compliance with all applicable legal provisions. The applicant is only valid for the direction, the equipment and configuration that are indicated above and still in compliance with all applicable legal provisions. The following manufacturer's documents were inspected:

Presence of Declaration of conformity template

Presence of CE symbol in the product label

Presence of restriction material

Presence of CE Harmonized standard in the declaration of conformity

Presence of product description in the technical construction file

Copyright of this Certificate is owned by CELAB®. It may not be reproduced without the prior approval of the General Manager. Use of this certificate is subject to the site.

Check the authenticity of this certificate and related information on www.celab.com, introducing the UCN number in the "Check document" copy of this certificate and registration on certificate copy. This document is allowed by laws. Do not use this document without full understanding of the content.

Manufacturer Contact: General Manager - CELAB

101 231 Voluntary Certificate rev. 3.31

www.celab.com

CQM

职业健康安全管理体系认证证书

证书编号: 050195454

获证组织: 江苏国茂减速机股份有限公司

认证依据标准: GB/T 28001-2011/OHSAS 18001:2007

发证日期: 2016年05月11日

有效期至: 2019年05月11日

方圓標認證

CQM

质量管理体系认证证书

证书编号: 050195454

获证组织: 江苏国茂减速机股份有限公司

认证依据标准: GB/T 19001-2016

发证日期: 2016年05月11日

有效期至: 2019年05月11日

方圓標認證

CQM

质量管理体系认证证书

证书编号: 050195454

获证组织: 江苏国茂减速机股份有限公司

认证依据标准: GB/T 19001-2016

发证日期: 2016年05月11日

有效期至: 2019年05月11日

方圓標認證

CQM

质量管理体系认证证书

证书编号: 050195454

获证组织: 江苏国茂减速机股份有限公司

认证依据标准: GB/T 19001-2016

发证日期: 2016年05月11日

有效期至: 2019年05月11日

方圓標認證

CQM

环境管理体系认证证书

证书编号: 001192974

获证组织: 江苏国茂减速机股份有限公司

认证依据标准: GB/T 24001-2016/ISO 14001:2015

发证日期: 2016年01月11日

有效期至: 2019年01月11日

方圓標認證

安全生产标准化

Work Safety Standardization

证书

CERTIFICATE

证书编号: 苏AQK3204JXIII201700503

获证组织: 江苏国茂减速机股份有限公司

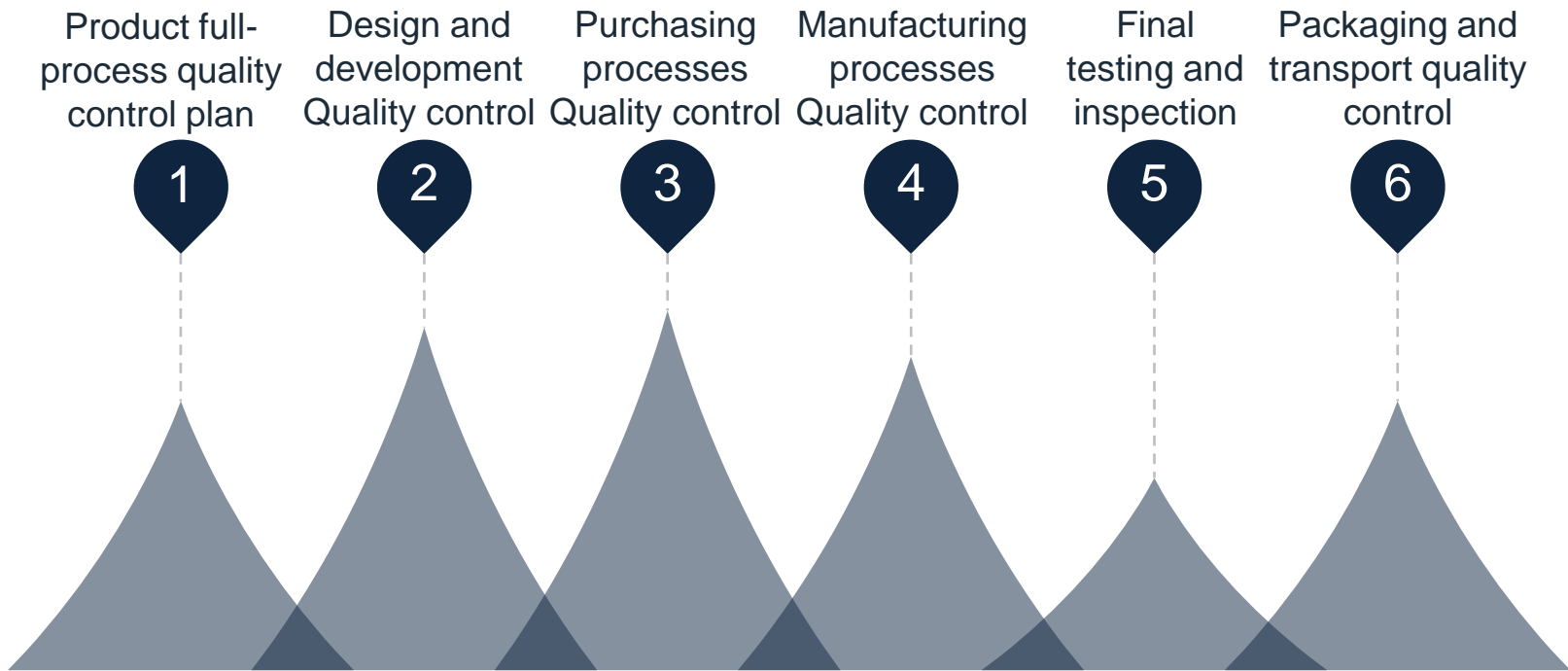
认证依据标准: GB/T 24001-2016/ISO 14001:2015

发证日期: 2017年09月28日

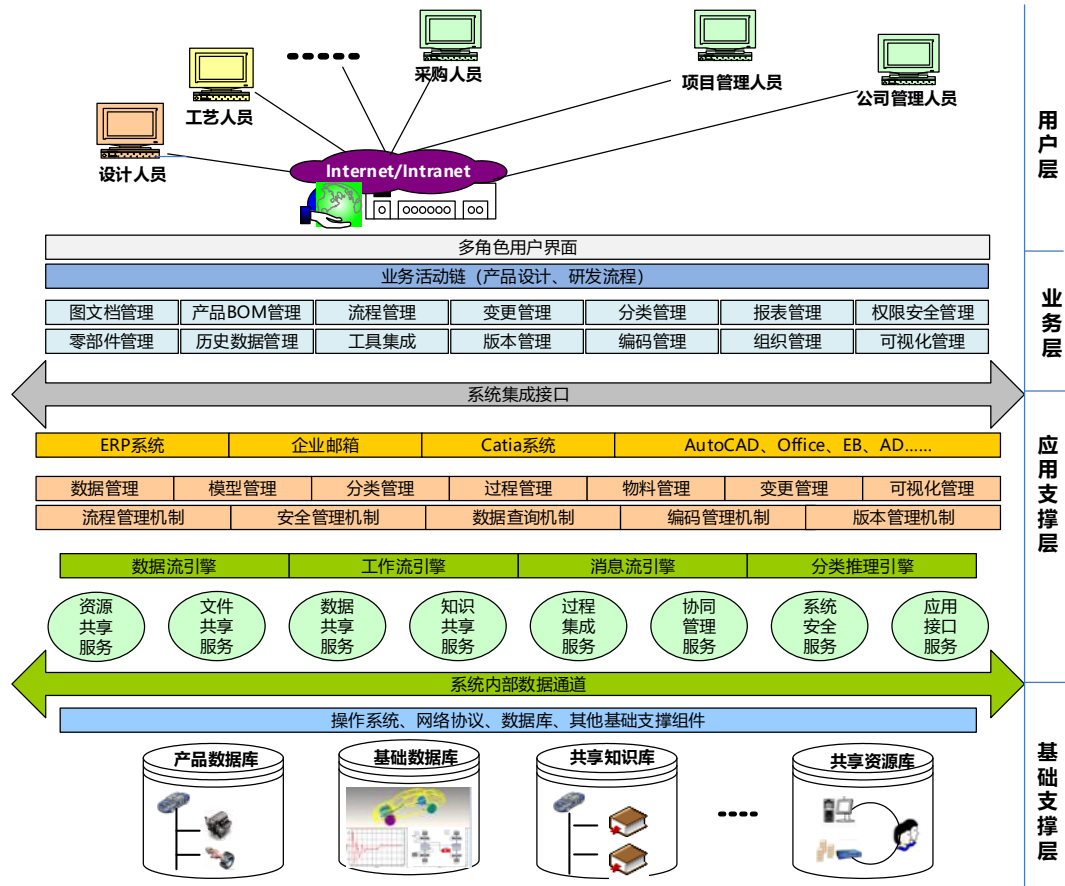
有效期至: 2020年9月

常州市安全生产监督管理局

CHANGZHOU ADMINISTRATION OF WORK SAFETY



Products management system



- Technological equipment



German Niles gear grinding machines



Lean production line



Hobbing machine cluster

- Technological equipment



Mechanical arm



Multipurpose heat treatment furnace



Okuma processing center

- Technological equipment



German Klingelberg gear inspection instruments



Whole-device gearbox performance testing platforms



German OBLF direct-read spectrometers

Pre-sales service

- ✓ Understanding customer needs
- ✓ Helping customers make product technology choices



Mid-sales service

- ✓ Optimal targeted solutions
- ✓ Tracking product status in real-time



After-sales service

- ✓ Product troubleshooting and optimization
- ✓ Superior maintenance service

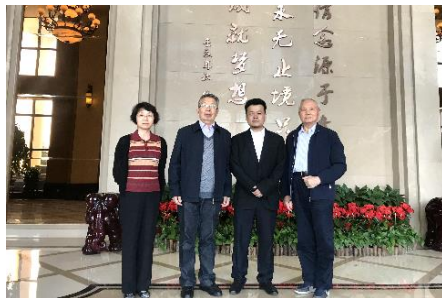
- Interchange and cooperation

"Modular gear motor design, manufacturing, and testing standards" serves as the leading unit for project responsibilities and standards drafting working groups. Guomao Reducers bears responsibility for leading and formulating collective standards for its industry.



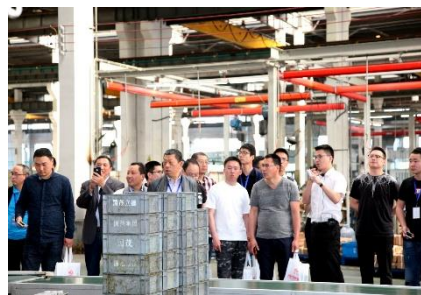
- Interchange and cooperation

We participate in industry association conferences, perform in-depth discussions on the industry's development, help the association promote the sharing of experience in the industry, and strive to be a good corporate citizen



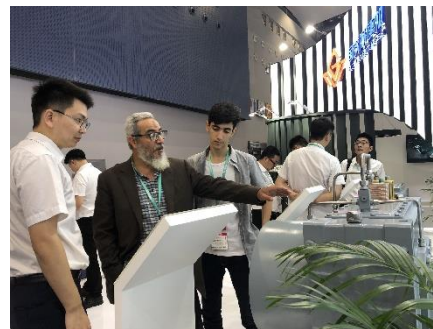
- Interchange and cooperation

We regularly engage in interchanges and visits with the industry association, key universities, and other enterprises



- Interchange and cooperation

We actively participate in domestic and foreign industry trade shows, where we strive to initiate interaction and cooperation



- Interchange and cooperation

We conduct in-depth technological conferences for the industry, which accelerate the promotion of new products and allow the exploration and interchange of application areas



- **Guomao's vision:** To become a world-class transmission specialist
- **Guomao's mission:** To contribute to industrialization
- **Guomao's business philosophy:** Focusing on the field of transmission, thoroughly realizing Guomao's spirit of "putting customers first and being a fighter" from top to bottom, seeking to benefit others, and striving to establish a community of interest with our employees, customers, and partners
- **Guomao's spirit:** Putting customers first and being a fighter

THANK YOU