

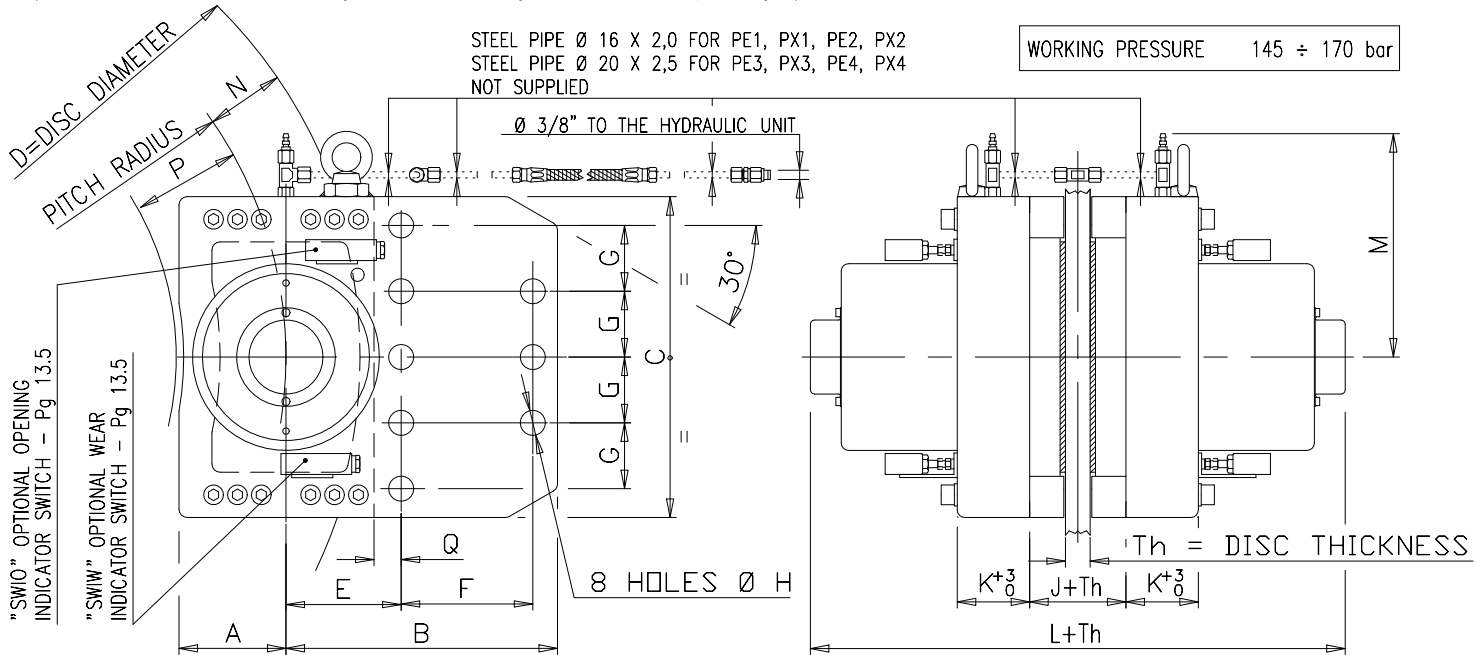
# GALVI CALIPERS PE AND PX HYDRAULICALLY OPERATED EMERGENCY CALIPERS



## PE PX - TECHNICAL DATA SHEET

PE PX-01

The GALVI PE and PX Calipers have been specially designed for static or emergency applications on discs with max peripheral speed of 7 m/s. Closing is actuated by two sets of disc springs housed in the cylinders while opening is performed at hydraulic pressure of 145 bar. Thanks to their special features these Calipers can be adapted to any disc thickness, however they do not allow axial displacement of the disc, nor can they ensure perfect balance of the forces exerted on the brake pads unless the two sets of disc springs have an identical setting. These Calipers can be operated by the GALVI EMEHYD<sup>®</sup> hydraulic units equipped with accumulator. The PX calipers are provided with more springs than the PE calipers. Therefore besides allowing a greater brakepad opening stroke, they have a lower loss of Braking Force and a higher number of operating cycles as shown in relative charts.



BRAKING TORQUE = BRAKING FORCE • PITCH RADIUS / 1000 [daN·m]

CALIPER TYPE	BRAKING FORCE (daN)	D = DIA. OF DISCS FROM-TO	CLEAR. EACH PAD	A	B	C	E	F	G	H	J	K <sup>+3</sup> / <sub>8</sub>	L	M	N	P	Q	2) cm <sup>3</sup>	3) MASS (kg)	
PE1-110	11000	800 ÷ ∞	1.0	105	280	315	115	140	65	25	70	67	513	240	75	108	26	29	201	
PX1-110			1.4																40	211
PE1-120	12000		1.0																29	201
PX1-120			1.4																40	211
PE1-130	13000		0.9																26	201
PX1-130			1.2																34	211
PE2-140	14000	1000 ÷ ∞	1.0	117	305	340	125	150	70	28	83	75	530	250	83	120	30	37	255	
PX2-140			1.4																51	277
PE2-150	15000		1.0																37	255
PX2-150			1.4																51	277
PE2-160	16000		0.9																33	255
PX2-160			1.2																44	277
PE3-180	18000	1200 ÷ ∞	1.2	135	330	410	140	160	80	31	88	95	587	275	95	140	33	61	386	
PX3-180			1.5																76	405
PE3-200	20000		1.2																61	386
PX3-200			1.5																76	405
PE3-220	22000		1.0																51	386
PX3-220			1.3																66	405
PE4-230	23000	1200 ÷ ∞	1.4	165	380	450	170	175	85	37	107	115	753	300	110	170	45	95	620	
PX4-230			1.8																122	650
PE4-250	25000		1.4																95	620
PX4-250			1.8																122	650
PE4-270	27000		1.2																81	620
PX4-270			1.6																108	650

1) The Braking Forces have a tolerance of ± 5%    2) Oil volume with nominal brake pad opening    3) Mass referred to two half calipers without support

